

**S&L® 双龙集团有限公司**  
SHUANGLONG GROUP CO., LTD.

CONTACT US

Phone: + 86-21-69178993

GMT+8: 8:00-17:00

Monday-Friday

Email: info@mixertec.com

Location: No. 299, Delixi Rd,  
Nanxiang Industrial Development Zone,  
Shanghai, 201802, China

CONNECT WITH US

Website: <https://www.mixertec.com/>

Youtube Channel: <https://www.youtube.com/@user-kq7qg5ox3o>

Web Showroom: <https://bestmixer.en.made-in-china.com/>

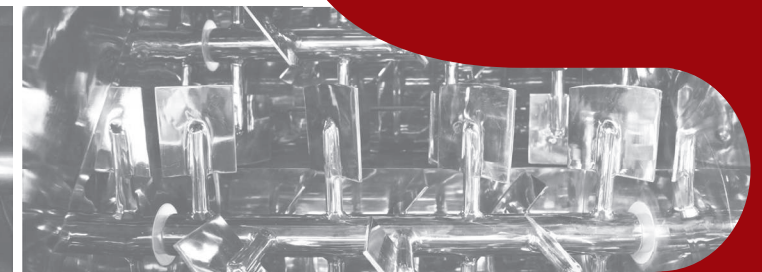
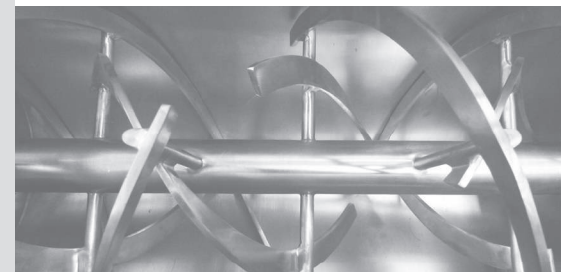
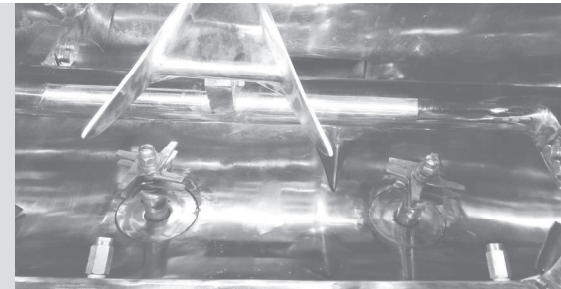
Wechat:



双龙集团官方微信



双龙集团官方网站





## ABOUT US

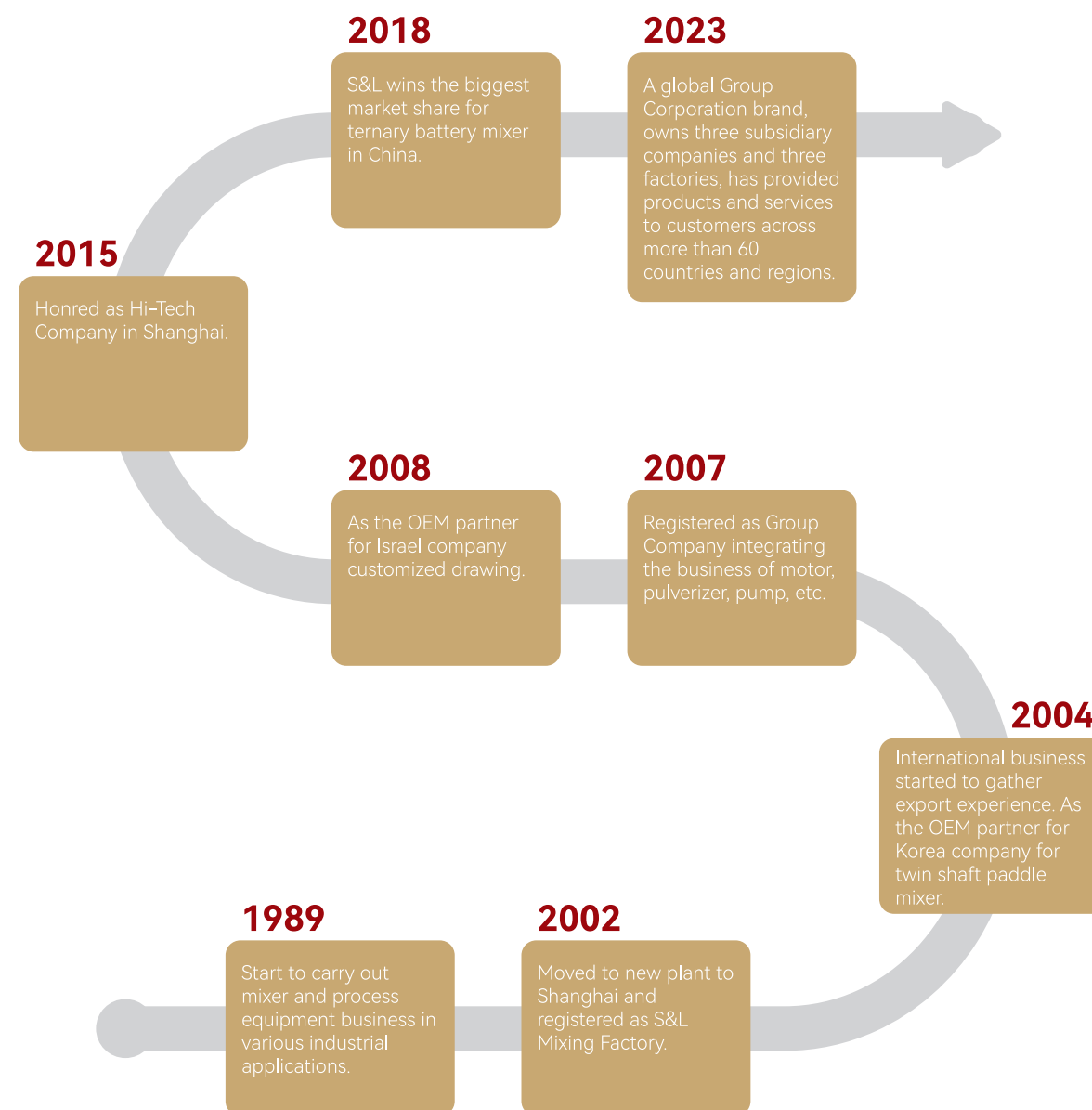
Shuanglong Group Co., Ltd. (S&L) is a high-tech enterprise dedicated to studying, developing, manufacturing and serving on powder mixing equipment. Founded in 1989, with over 30 years' development, it becomes the leading supplier for powder mixing equipment in China. Three production bases are located in Shanghai, Zhejiang and Jiangsu, covering an area of 150,000 M2 and total building area of 78,000 M2. The headquarter is located in Nanxiang industrial development zone, Jiading district, Shanghai. The Group owns a listed company, Shanghai Explosion-proof Motor Yancheng Corp., Ltd., which has more than 500 employees and an annual output value exceeding 600 million.

Shuanglong has been awarded the quality management system certificate of ISO 9001, 14001, 18000, production certificate of SGS and CE, and manufacturing license for I,II Pressure Vessel, also winning many honorary titles such as "Shanghai Famous Brand", "Shanghai Famous Brand" "Jiading District Small Giant Enterprise" "New High-tech enterprise", etc.

Shuanglong has a professional R&D and production team, advanced intelligent production equipment and testing instruments, which have promoted its growth into a famous brand in the Chinese powder equipment industry. S&L products are widely sold to more than 60 countries and regions including Europe, Asia, Africa, North America and South America. Now, S&L is well-known to the world.

Shuanglong will continue to adhere to the slogan of "Mixing is our specialty!" and strive to achieve the goal of "being the world's leading manufacturer of powder equipment". Our team will continue to help customers create more benefits with high-quality products, professional technology and sincere service.

## BRIGHT FUTURE





# PRODUCT LIST



Scan To Find Our Products

			
Ribbon Mixer for Lithium Battery	Plough Paddle Dryer	High Temperature Cladding Kettle System	Vertical Ribbon Mixer
			
Ribbon Mixer for Lithium Battery	Ribbon Blender	Paddle Mixer	Conical Screw Mixer
			
Continuous Mixer	Dryer Mixer with Conventional Jacket	Horizontal Mixer with CIP	Vertical Blender with CIP
			
Plough Mixer with Retractable Rotor	Paddle Mixer with Retractable Rotor	Intensive Mixer	Intensive Mixer

## Typical Application:

- Animal Feed
- Flavouring
- Bakery premixes
- Engineered plastic resins
- Pharmaceuticals
- Rare Earth
- Chemicals
- Milk Powder
- Dried food products
- Pesticides and herbicides
- Fertilizers
- Carbon black

# WHY US





# WHY US-QUALIFICATIONS

## ISO质量管理体系认证 Iso Quality Management System Certification



## 环境管理体系认证 Environmental Management System Certification



## CE证书 CE Certificate



# SERVICE

S&L highly focus on service in order to provide a comprehensive solution to customers including before-sales service and after-sales service. We have advanced test center to help customer make final decision after different testing in our laboratory. 24/7 after-sales service is available to all our clients. All our after-sales service representatives are well trained with strict system to ensure top quality service, especially for international clients. We always care about your mixer running and after-sales service is always at your side to ensure everything runs perfectly with guaranteed quality and performance.

Good quality is not only machine itself. We aim to provide lifelong technical support to our every client as needed. Enabling us to give you timely support.

# CLAIM A QUOTE



Sales email: [info@mixertec.com](mailto:info@mixertec.com)



Susan Wang:  
[susan.wang@shuanglong.com](mailto:susan.wang@shuanglong.com)  
Whatsapp: 008613818220699



Carly Lee:  
[carly.lee@shuanglong.com](mailto:carly.lee@shuanglong.com)  
Whatsapp: +86 130 6162 6597



Terry Yu:  
[terryyu@shuanglong.com](mailto:terryyu@shuanglong.com)  
Whatsapp: +86 15601613150

